

# Chimneyville Weavers and Spinners Guild

## March 2024 Inside this Issue

### PG. 1

- ❖ Message from the President

### PG. 2

- ❖ CWSG Program Schedule
- ❖ Annual Meeting Announcement
- ❖ Upcoming Events

### PG. 3

- ❖ Presentation of the 2024 Officer Nomination Slate
- ❖ HGA Textiles and Tea Schedule

### PG. 4

- ❖ Committees Appointed
- ❖ The 80/20 Rule

### PG. 5

- ❖ Member Submissions
- ❖ CWSG February Board Meeting Minutes

### PG. 6

- ❖ CWSG February Guild Meeting Minutes
- ❖ CWSG Organization Information

Logo image adapted from image graciously provided by Marcy Petrini at <https://www.marcypetrini.com/>

## Message from the President

*From Alma Ellis, President*

Dear CWSG Members,

Our program year is hopping along into spring activities! We'll be gathering on Sat., Mar. 16, at 10 a.m. at the Madison Public Library. At our monthly meeting, member Janet Lee will share information on spinning art yarns. Janet spins distinctive yarns for her beautiful tapestry fabrics, so this will be a treat. At our March meeting, we'll also be drawing for a goody bag provided by the Handweavers Guild of America, Inc. Are you feeling lucky?

Don't forget our demonstration later this month at Art in the Park in Clinton on Sat., Mar. 23, from 10 a.m. until 1 p.m. Participating members will spin and weave at Lion's Club Park at 251 East Leake Street.

Join us!

Alma



# CWSG Program Schedule

## Spinning Art Yarns, March 16<sup>th</sup>

Guild member Janet Lee will walk everyone through her process of spinning art yarns and then show a few ways to weave with them.



## Annual Meeting Announcement

*Submitted by Alma Ellis*

Since Sheep to Shawl is scheduled this year in lieu of the guild's April meeting, the annual meeting will be held at our March 16<sup>th</sup> meeting. Information on the officer slate and voting instructions are included in a separate section of this newsletter.

Additionally, the Handweavers Guild of America has graciously provided a goody bag to our guild and we will be giving it away to an attendee at our March meeting!



## Upcoming Events

January 30 –  
April 21,  
2024

The Lauren Rogers Museum of Art in Laurel, MS is exhibiting Handstitched Worlds: The Cartography of Quilts organized by the American Folk Art Museum in New York. For more information go to <https://www.lрма.org/exhibition/handstitched-worlds-the-cartography-of-quilts/>

## CWSG Program Schedule

**September 16, 2023**

*How I Did That*

Presented by CWSG Members  
Moderator Donna Peyton

**October 21, 2023**

*Natural Dyeing with Cochineal*

Presented by Marcy Petrini

**November 18, 2023**

*Pendleton Woolen Mills*

Presented by Beth Palmer

**December 9, 2023**

Christmas Party

**January 6, 2024**

Roc Day Activities

**February 17, 2024**

*Wish I'd Known That!*

Presented by CWSG Members  
Moderator Debbie Stringer

**March 16, 2024**

*Spinning Art Yarns*

Presented by Janet Lee

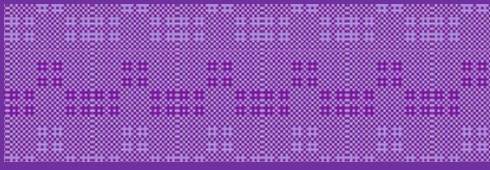
**April 6, 2024**

Sheep to Shawl (demonstration)

**May 18, 2024**

*History of Textiles*

Presented by Donna Peyton



### HGA Textiles and Tea

Each Tuesday at 4 pm (EST), HGA hosts a conversation with some of the most respected fiber artists in the field today. They are broadcast via Zoom and free to view and open to all. Full schedule at [weavespindye.org](http://weavespindye.org)

**March 5, 2024: Penny Lacroix**  
*sponsored by Reno Fiber Guild*

**March 12, 2024: Suzi Ballenger**  
*sponsored by A Place to Weave*

**March 19, 2024: Jennie Hawkey**  
*sponsored by Carla Tilghman in honor of Elizabeth Howard*

**March 26, 2024: Margaret Stump**  
*sponsored by Grace Tully*

March 23

Our guild will be demoing at Art in the Park on Saturday, March 23 from 10 am - 1 pm at the Lion's Club Park in Clinton. Please let Alma know if you will be able to attend.

April 6

Our annual CWSG Sheep to Shawl Event will be held at the Mississippi Ag Museum on April 6<sup>th</sup> from 10 am – 3 pm.

## Presentation of 2024 Officer Nomination Slate

*Submitted by Beth Palmer and Judy Foster*

The Nominating Committee presents the following slate of candidates for consideration in the CWSG 2024 election for Secretary, Treasurer, and Librarian/Historian. Voting will take place at the CWSG Annual Meeting on Saturday, March 16, at the Madison Library. Note: If you are unable to attend the meeting, please send your vote (Yes or No) to CWSG secretary Jeanne Marie: [jmpeet@bellsouth.net](mailto:jmpeet@bellsouth.net) no later than Saturday, March 16. Nominations from the floor will be accepted at the Annual Meeting.

### Secretary – Sarah Pair

Sarah Pair is a spinner and a weaver. Originally from Fort Smith, AR, Sarah moved to Jackson in 2020. She is Director of Collections at the Mississippi Agriculture and Forestry Museum, working specifically with fiber art related programming. Sarah is serving as co-chair for Sheep to Shawl in April. She joined CWSG after visiting with members at the co-op booth at the Vicksburg Fiber Festival.

### Treasurer – Gio Chinchar

Gio Chinchar is a weaver. A longtime CWSG member, Gio has served as the guild's president, vice president and secretary and has volunteered for many committees. Known for her beautiful handwoven towels, which she admits are her favorite projects, Gio began weaving after her retirement as a college professor in 2006.

### Librarian / Historian – Janet Lee

Janet Lee is a spinner and a weaver. She has lived in the Jackson area all her life. While she has enjoyed practicing many art forms for several decades, she didn't find spinning and weaving until 2018. She has served as the Librarian/Historian since 2020.

# Committees Appointed

**Submitted by Alma Ellis**

Following discussion at the February meeting, Sheep to Shawl, Nominating, Location Planning and Media Committees were organized and members appointed.

Debbie Stringer and Sarah Pair were announced as co-chairs of the Sheep to Shawl Committee. Sheep to Shawl will be held at the Mississippi Ag Museum on Sat., April 6, from 10 a.m. to 3 p.m. A sign-up sheet for volunteers was passed around at the meeting.

Beth Palmer and Judy Foster agreed to serve on the Nominating Committee to provide candidates for Secretary and Treasurer.

Gio Chinchar and Lynn Watkins are serving on the Location Planning Committee, to determine the best monthly meeting location for the 2024-2025 program year.

Janet Lee will serve as chair of the Media Committee to better coordinate social media and technologies for the guild. Committee members include Morgan Bowser, Beth Palmer, Donna Peyton, and Beverly Anglin.

## The 80/20 Rule

**Submitted by Beth Palmer**

One spring day in the mid-19th century, an economist named Vilfredo Frederico Damaso Pareto noticed that just 20% of his pea plants generated 80% of his pea harvest. From this simple walk in the garden, Pareto developed what's known today as the 80/20 rule. Most of us think of this as 20% of the people in any group doing 80% of the work.

As one member of our nominating committee, I'd like to encourage each of us to consider what "time, talent, and treasure" (to use some church language) we might contribute to help our guild run smoothly, welcome newcomers, and grow. Our membership typically hovers around 35-40 people. The 80/20 rule might indicate that just eight of our members (or 20%) do 80% of the work required to develop programs, create agendas, collect dues and write checks, produce minutes and keep track of our history, organize our library, create our monthly newsletter, and develop content for our social media outlets.

When you receive a call inviting you to consider holding a guild office for

### "Roc Day in Mississippi" Article

*Mississippi Folklife* magazine published an article in their Winter 2024 Issue by March Petrini on the origins of Roc Day and how these traditions are celebrated and kept alive through the Gulf States Roc Day events.

To read this lovely article, go to

<https://mississippifolklife.org/articles/roc-day-in-mississippi>

the next two years or serving on a committee, please think about whether you're part of the 80% or the 20%. Thanks!

## Member Submissions

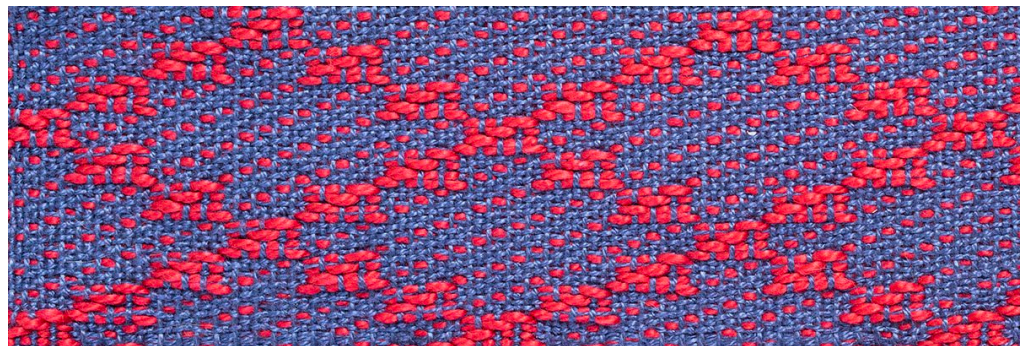
*Submitted by Various Members*

### **From Nancy Hester:**

At the end of this newsletter you will find a very nice Sample Swatch Sheet sent by the Contemporary Handweavers of Houston (<https://www.weavehouston.org/>) in memory of Donna Sanner to celebrate her wonderful accomplishments and contributions to the weaving world.

### **From Marcy Petrini:**

Have you ever heard of Quigley? Here is a sample:



It's a tied-unit weave presumably designed by Viola Joyce Quigley who founded the Memphis Weavers Guild in the forties, according to a Memphis guild member.

I love the twill line that goes through the blocks.

We will look at Quigley and other tied unit weaves at our monthly study group on Thursday, March 14, 2024, at 2 pm at the Craft Center.

It is also one of the topics in my February's blog:

<https://www.marcypetrini.com/marcy-s-blogs/372-blog-122-weaving-classification>

## CWSG Board Meeting Minutes from February 7, 2024

*Submitted by Jeanne Marie Peet*

The Chimneyville Weavers and Spinners Guild Board of Directors met by Zoom conferencing on Wednesday, February 7, 2024, at 5 p.m. The meeting was called to order by President Alma Ellis. Other members

attending were Secretary Jeanne Marie Peet, Treasurer Heather Mitchell, Librarian/Historian Janet Lee, and Past-President Nancy Hester.

The minutes of the January 14, 2024, meeting of the board of directors were approved upon a motion by Janet Lee and second by Heather Mitchell. The motion carried.

The first drafts of the Revised Bylaws and Policies and Procedures have been sent to members of the board to review. Copies will be sent to the guild members prior to the next meeting.

As our guild moves toward more use of social media, a committee will be appointed to explore the effective use and integration of Websites, Facebook, Instagram, and other options.

Sheep to Shawl on April 6, 2024, at the Mississippi Agriculture and Forestry Museum will be co-chaired by Debbie Stringer and Sarah Pair. There will not be a guild sale at this event.

The offices of Secretary, Treasurer, and Librarian/Historian will be elected at the April meeting. President Alma Ellis will appoint a nominating committee to consider the slate of officers for the open positions.

Board members Alma Ellis, Jeanne Marie Peet, Heather Mitchell, and Janet Lee attended various sessions of the HGA Board of Directors Retreat held on Zoom on Saturday, January 27, 2024.

Guild membership is currently listed as 35 members.

Members will have the opportunity to demonstrate at Art in the Park in Clinton, MS on March 23, 2024.

The meeting was adjourned.

## CWSG Meeting Minutes from February 17, 2024

*Submitted by Jeanne Marie Peet*

The February meeting of the CWSG was called to order by President Alma Ellis on Saturday, February 17, 2024, at 10 a.m. at the Madison Public Library in Madison, Mississippi. With 17 members present, the requirement for a quorum (at least nine members) was met. Jacqueline Dutsch moved that the agenda be accepted, and Donna Peyton seconded the motion. The agenda was approved by voice vote. The minutes of the November 18, 2023, meeting, as printed in the CWSG December 2023 newsletter, were presented for approval. Janet Lee moved to accept the minutes as printed and Marcy Petrini seconded. The minutes were approved by voice vote.

### About Chimneyville

#### Weavers & Spinners Guild

CWSG brings together people who enjoy and want to learn more about weaving and spinning. Our guild is based in the Jackson, Mississippi area.

#### Officers

Each officer serves a two-year term on the CWSG board.

President: Alma Ellis

Vice President: Donna Peyton

Secretary: Jeanne Marie Peet

Treasurer: Heather Mitchell

Librarian/Historian: Janet Lee

Past President: Nancy Hester

#### Membership

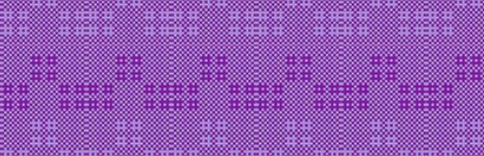
Membership is open to anyone with like interests. The annual membership fee is \$25. A membership form is available at <http://cvillewsg.com/> and click on "membership." CWSG members may also join the CWSG Co-op, which is a member of the Craftsmen's Guild of Mississippi and provides opportunities to sell original handwoven and handspun work through CGM's shows and gallery.

#### Meetings/Events

CWSG normally meets on the third Saturday of the month, September through May. Meetings include a business session, program, and show-and-tell. We begin at 10 a.m. at the Madison City Library in Madison, Miss., unless otherwise noted. We also conduct public outreach activities such as weaving and spinning demonstrations and a springtime demonstration day known as Sheep to Shawl.

#### Newsletter

Please email newsletter content submissions to newsletter editor Janet Lee (jlemasters100@yahoo.com) by the first day of the month of publication. If you are sending a photo, please include caption information.



The Treasurer's Report was given by Heather Mitchell.

The CWSG Bylaws and Policies and Procedures documents have been updated to reflect current processes and practices of the Guild. Each member previously received a copy of the revisions by email to review. Jacqueline Dutsch presented the major highlights of the revisions made by the Bylaws/Policies and Procedures committee. After brief discussion, Marva Goodman moved that we accept the changes to the Bylaws and Policy and Procedures of the CWSG as presented. Sharon Williams seconded the motion. The motion carried.

Marcy Petrini gave a report on ROC Day, with finalized details to be presented later in her written report. Seventy registered attendees and staff were present at the event, enjoying spinning, weaving, knitting, and visiting with friends. Door prizes, donated by vendors and members, were announced throughout the day, and games added a spirit of fun and friendly competition. Six fiber-related vendors provided the opportunity for shopping, while the Destash Table offered gently used items at bargain prices. The Destash Sale netted \$699 for the Guild. A one-day exhibit in the George Berry Gallery showcased handwoven and hand spun items created by Guild members. A gift of \$500 was authorized by the board to be presented to the Craftsmen's Guild for use of the William Waller Craft Center and for their assistance in the arrangements.

Sheep to Shawl will be April 6, 2024, at the Mississippi Agricultural and Forestry Museum in Jackson. Sarah Pair and Debbie Stringer will co-chair the event.

Coordination of social media and related technology continues to be a priority for the Guild. President Alma Ellis will appoint a committee to research ways to effectively use these technologies.

A nominating committee of two members will be appointed by Alma Ellis this month to secure a slate of candidates to be presented for election in April. The officers to be elected this year are Secretary, Treasurer, and Librarian/Historian. Janet Lee has offered to continue as Librarian/Historian for another term, so the offices of Secretary and Treasurer will need to be filled.

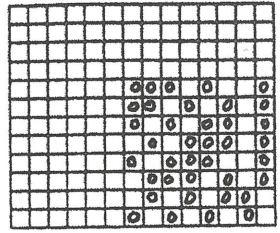
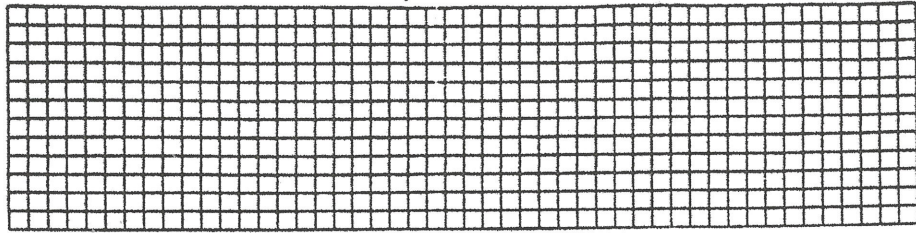
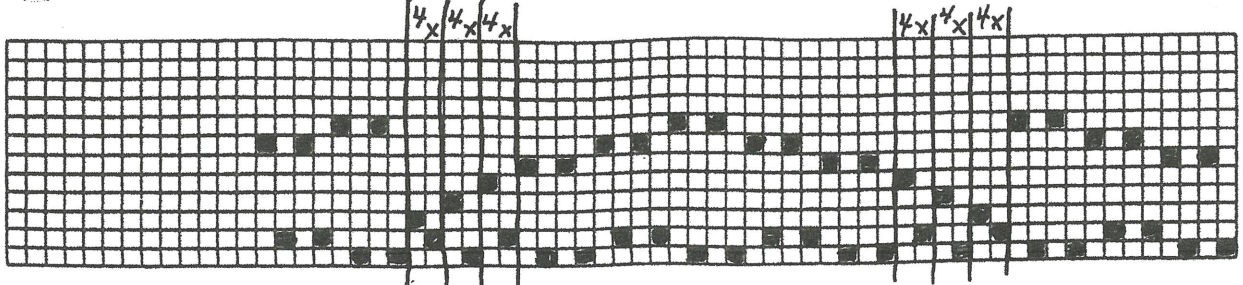
A Location Planning Committee will be appointed to look at options for our meeting and program locations for the 2024-25 year. A written agreement signed by both parties is a top priority in selecting the location.

Art in the Park in Clinton, Mississippi on Saturday, March 23, 2024, will provide an opportunity for members to demonstrate spinning and weaving. The event will be at Lions Club Park in Clinton from 10 am to 1 pm.

A guest, Elaine Gager, was introduced and welcomed to the meeting.

Jeanne Marie Peet moved that the meeting be adjourned. Members then participated in an interactive informative program of Wish I'd Known That! facilitated by Debbie Stringer.

After the business meeting and program, a brief meeting of the CWSG Co-Op was held to discuss future events.



Reed 10 or 12  
 Sley 2 ends per dent  
 Sett 20-24 ends per inch  
 Total \_\_\_\_\_ ends

KEY  
 ◡ = in one dent  
 ○ = skip dent  
 X = sinking shed  
 O = rising shed

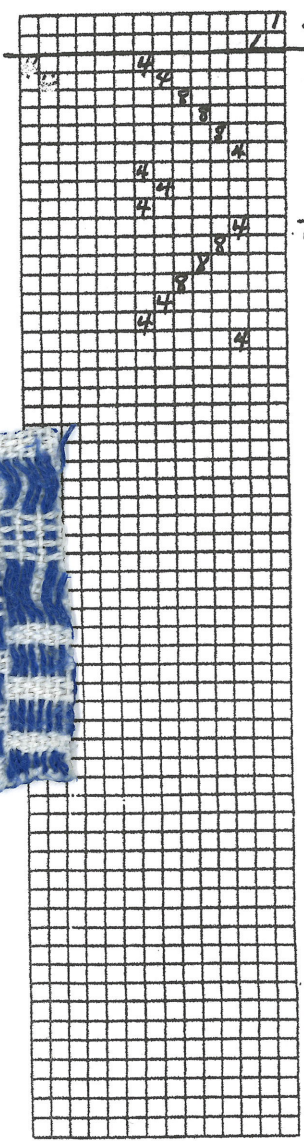
Warp Sample

Size 10/2  
 Fiber cotton  
 Color white

Weft Sample

Size 10/2  
 Fiber cotton  
 Color blue

Finishing Details



tabby  
 use  
 tabby

This fabric was used for a zipper bag to ... of an iPad  
 These samples are the remnants from that project.

Donna Sanner was a longtime member of CHH. She did several multi-year, in-depth research projects on historical fabrics and/or weave structures. This fabric came from explorations of Summer & Winter and tied overshot. When she died a year ago, this yardage was in her stash. We thought that we would like to share it with you in memory of a wonderful mentor, teacher, and guild member who was always willing to share her time and talents with us.

Weaver Donna Sanner

P. 163 # 565  
 Carol Strickler's  
 8 shaft Patterns

3/2024